

TRIPOD TURNSTILE GALAXY - M

Galaxy-M is a turnstile access solution that intends to combine advantages of regular motorized tripod with the requirement of elegant appearance. LED lighted glass panel and special design benefits you with sophisticated look on affordable price.



STAINLESS STEEL HOUSING AND GLASS WITH LIGHTS
- RECIPE OF SUCCESS FOR ANY INTERIOR

 **60**
pers/min
FREE ACCESS

 **20**
pers/min
CROSSING CAPACITY

 **605**
mm
PASSAGE WIDTH

 **IP 41-54***
PROTECTIVE LEVEL

 **DROP-ARM**

 **MOTORIZED**

 **BI-DIRECTIONAL**

Advantages

- Bi-directional motorized tripod turnstile with panic / bar drop-arm function
- High quality at a cost effective price
- Integration with any type of access control and ID systems
- Low power consumption
- Panic / bar drop-arm function with automatic reset
- Whisper quiet, low noise operation
- Optional indoor or outdoor housing types
- Wide range of accessories
- Availability of a backup battery connection
- Complete supply set as a standard

Standard

- 4 LED indicators
- Wired remote control
- Supply of backup battery power connection
- Anti-panic function with automatic reset

Options

- Any additional devices upon request (e.g. passage counter, RFID/Proximity/BioMetric readers, coin acceptor, push button, barcode and QR-code reader)
- Heating function for external installation (for cold climates)
- Cooling system
- Tripod Twin modification is available
- Dummy housings can be mounted adjacent to tripod turnstile

* first figure is standard, all other available upon request.



www.tiso.global
+380 (44) 291-21-11
e-mail: sales@tiso.global



Technical Specifications:

Unit width, mm	745
Unit length, mm	1314
Unit height, mm	1000
Mechanism	Motorized

Controlled by:



access control system;



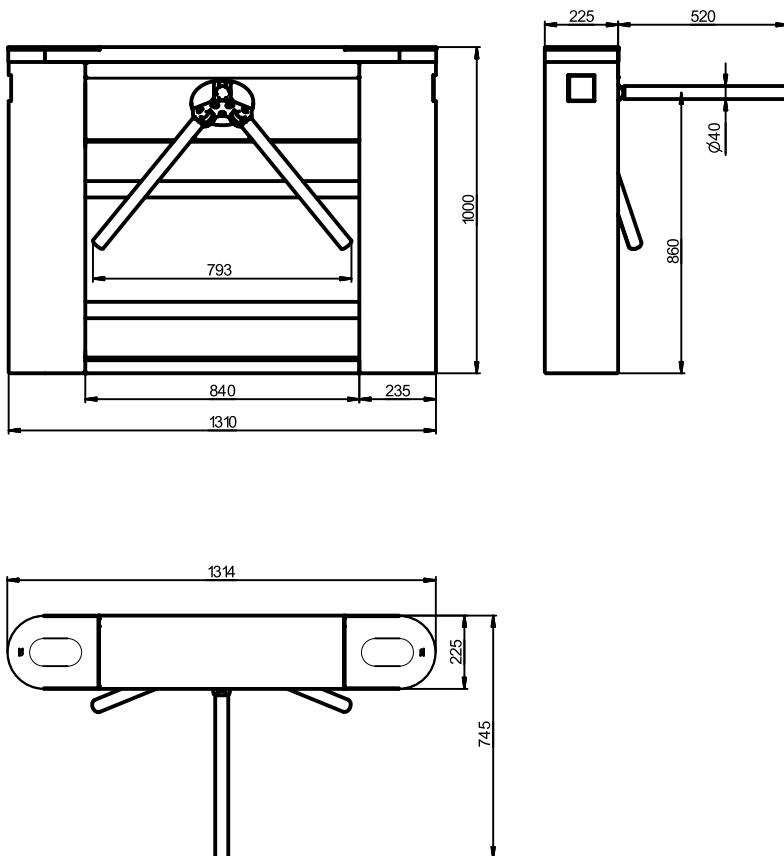
push button control unit

Electrical Specifications:

- Voltage:
 - from the AC (100-240)V, 50/60Hz;
 - from a DC source 12 V;
- Maximum power consumption 55W per pass;

Ambient temperature range:

- Standard +1°C to +40°C, up to IP41
- Optional -20°C to +55°C, up to IP54



Materials

Standard housing	Brushed SS AISI 304
Available housing	Brushed SS AISI 316 Polished SS AISI 304 Polished SS AISI 316 Powder coated RAL
Tripod hub	Cast aluminum with painted grey finishing

Installation areas:

- Governmental Institutions
- Military Bases
- Nuclear Power Plants
- Production sites (Industrial Plants)
- Commercial areas
- Financial institutions
- Airport Premises
- Business (Office) Centers
- Hotels
- Sport Complexes
- Recreation areas
- Urban areas
- Education Institutions
- others